

PACO14683

Product Information

Size:

50ul

Reactivity:

Human, Mouse

Source:

Rabbit

Isotype:

IgG

Applications:

ELISA, WB, IHC

Recommended dilutions:

ELISA:1:2000-1:10000, WB:1:1000-1:5000,
IHC:1:100-1:300

Protein Background:

Maspin (mammary serine protease inhibitor) also known as serpin B5 is a protein that in humans is encoded by the SERPINB5 gene. [1] This protein belongs to the serpin (serine protease inhibitor) superfamily. [1] SERPINB5 also functions as a tumor suppressor gene in epithelial cells. The expressed protein suppresses the ability of cancer cells to invade and metastasize other tissues. The protein also functions as an angiogenesis inhibitor. It blocks the growth, invasion, and metastatic properties of mammary tumors. As it does not undergo the S (stressed) to R (relaxed) conformational transition characteristic of active serpins, it exhibits no serine protease inhibitory activity.

Gene ID:

SERPINB5

Uniprot

P36952

Synonyms:

serpin peptidase inhibitor, clade B (ovalbumin), member 5

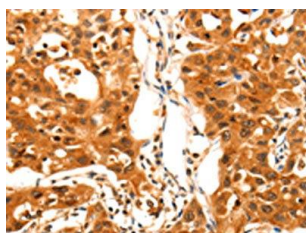
Immunogen:

Fusion protein of human SERPINB5.

Storage:

-20° C, pH7.4 PBS, 0.05% NaN3, 40% Glycerol

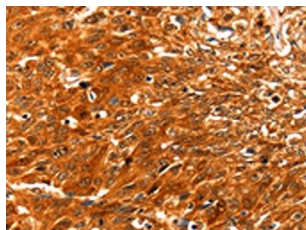
Product Images



The image on the left is immunohistochemistry of paraffin-embedded Human lung cancer tissue using PACO14683(SERPINB5 Antibody) at dilution 1/60, on the right is treated with fusion protein. (Original magnification: x—200).



Gel: 12%SDS-PAGE, Lysate: 40 μ g, Lane 1-2: Mouse esophagus tissue, human cervical cancer tissue, Primary antibody: PACO14683(SERPINB5 Antibody) at dilution 1/1000, Secondary antibody: Goat anti rabbit IgG at 1/8000 dilution, Exposure time: 13 seconds.



The image on the left is immunohistochemistry of paraffin-embedded Human esophagus cancer tissue using PACO14683(SERPINB5 Antibody) at dilution 1/60, on the right is treated with fusion protein. (Original magnification: x—200).