

MAG Antibody



PACO14671

Product Information

Size:

50ul

Reactivity:

Human, Mouse, Rat

Source:

Rabbit

Isotype:

IgG

Applications:

ELISA, WB, IHC

Recommended dilutions:

ELISA:1:1000-1:5000, WB:1:500-1:2000,
IHC:1:25-1:100

Protein Background:

The protein encoded by this gene is a type I membrane protein and member of the immunoglobulin superfamily. It is thought to be involved in the process of myelination. It is a lectin that binds to sialylated glycoconjugates and mediates certain myelin-neuron cell-cell interactions. Three alternatively spliced transcripts encoding different isoforms have been described for this gene.

Gene ID:

MAG

Uniprot

P20916

Synonyms:

myelin associated glycoprotein

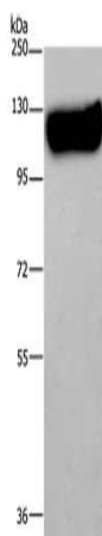
Immunogen:

Fusion protein of human MAG.

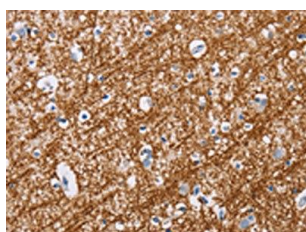
Storage:

-20° C, pH7.4 PBS, 0.05% NaN₃, 40% Glycerol

Product Images



Gel: 8%SDS-PAGE, Lysate: 40 μ g, Lane: Mouse brain tissue, Primary antibody: PACO14671(MAG Antibody) at dilution 1/400, Secondary antibody: Goat anti rabbit IgG at 1/8000 dilution, Exposure time: 2 seconds.



The image on the left is immunohistochemistry of paraffin-embedded Human brain tissue using PACO14671(MAG Antibody) at dilution 1/20, on the right is treated with fusion protein. (Original magnification: x—200).