

MAD1L1 Antibody



PACO14665

Product Information

Size:

50ul

Reactivity:

Human, Mouse

Source:

Rabbit

Isotype:

IgG

Applications:

ELISA, WB, IHC

Recommended dilutions:

ELISA:1:2000-1:5000, WB:1:500-1:2000,
IHC:1:25-1:100

Protein Background:

MAD1L1 is a component of the mitotic spindle-assembly checkpoint that prevents the onset of anaphase until all chromosome are properly aligned at the metaphase plate. MAD1L1 functions as a homodimer and interacts with MAD2L1. MAD1L1 may play a role in cell cycle control and tumor suppression. Three transcript variants encoding the same protein have been found for this gene.

Gene ID:

MAD1L1

Uniprot

Q9Y6D9

Synonyms:

MAD1 mitotic arrest deficient-like 1 (yeast)

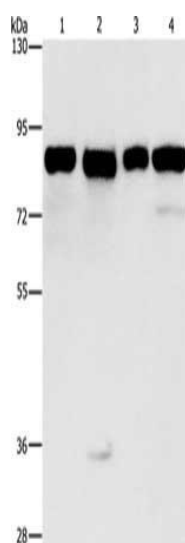
Immunogen:

Fusion protein of human MAD1L1.

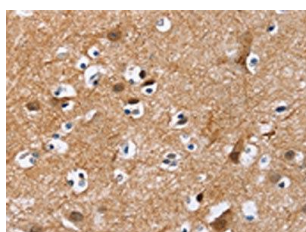
Storage:

-20° C, pH7.4 PBS, 0.05% NaN₃, 40% Glycerol

Product Images



Gel: 8%SDS-PAGE, Lysate: 40 μ g, Lane 1-4: HeLa cells, 231 cells, HepG2 cells, Raji cells, Primary antibody: PACO14665(MAD1L1 Antibody) at dilution 1/500, Secondary antibody: Goat anti rabbit IgG at 1/8000 dilution, Exposure time: 1 second.



The image on the left is immunohistochemistry of paraffin-embedded Human brain tissue using PACO14665(MAD1L1 Antibody) at dilution 1/25, on the right is treated with fusion protein. (Original magnification: \times —200).