

PACO14659

---

## Product Information

**Size:**

50ul

**Reactivity:**

Human, Mouse, Rat

**Source:**

Rabbit

**Isotype:**

IgG

**Applications:**

ELISA, WB, IHC

**Recommended dilutions:**

ELISA:1:2000-1:10000, WB:1:1000-1:5000,  
IHC:1:25-1:100

**Protein Background:**

Latexin, also designated endogenous carboxypeptidase inhibitor (ECI) or tissue carboxypeptidase inhibitor (TCI), belongs to the protease inhibitor I47 family of proteins. Latexin acts as a non-competitive, reversible inhibitor for metallo-carboxypeptidases (MCPs), including CPA1, CPA2 and CPA4. It is a cytoplasmic protein that is highly expressed in heart, prostate, pancreas, ovary, kidney, brain and colon. Latexin consists of two topologically equivalent subdomains that bind to MCPs with low specificity, which gives it with the flexibility to inhibit all vertebrate A/B MCPs.

**Gene ID:**

LXN

**Uniprot**

Q9BS40

**Synonyms:**

latexin

**Immunogen:**

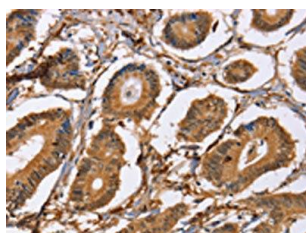
Fusion protein of human LXN.

**Storage:**

-20°C, pH7.4 PBS, 0.05% NaN3, 40% Glycerol

## Product Images

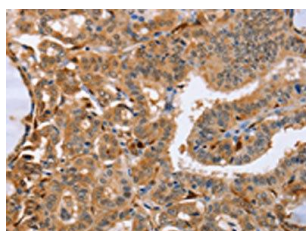
---



The image on the left is immunohistochemistry of paraffin-embedded Human colon cancer tissue using PACO14659(LXN Antibody) at dilution 1/25, on the right is treated with fusion protein. (Original magnification: x—200).



Gel: 10%SDS-PAGE, Lysate: 40 &mu; g, Lane: A549 cells, Primary antibody: PACO14659(LXN Antibody) at dilution 1/667, Secondary antibody: Goat anti rabbit IgG at 1/8000 dilution, Exposure time: 10 seconds.



The image on the left is immunohistochemistry of paraffin-embedded Human thyroid cancer tissue using PACO14659(LXN Antibody) at dilution 1/25, on the right is treated with fusion protein. (Original magnification: x—200).