

Product Information

Size:

50ul

Reactivity:

Human, Mouse

Source:

Rabbit

Isotype:

IgG

Applications:

ELISA, IHC

Recommended dilutions:

ELISA:1:1000-1:5000, IHC:1:10-1:50

Protein Background:

The p70/p80 autoantigen is a nuclear complex consisting of two subunits with molecular masses of approximately 70 and 80 kDa. The complex functions as a single-stranded DNA-dependent ATP-dependent helicase. The complex may be involved in the repair of nonhomologous DNA ends such as that required for double-strand break repair, transposition, and V(D)J recombination. High levels of autoantibodies to p70 and p80 have been found in some patients with systemic lupus erythematosus.

Gene ID:

XRCC6

Uniprot

P12956

Synonyms:

X-ray repair complementing defective repair in Chinese hamster cells 6

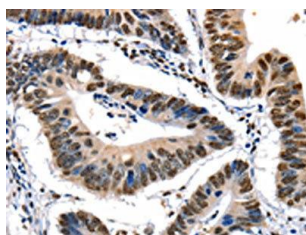
Immunogen:

Fusion protein of human XRCC6.

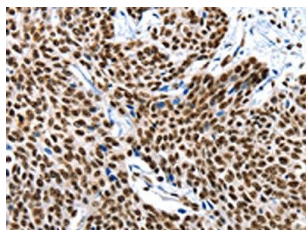
Storage:

-20° C, pH7.4 PBS, 0.05% NaN₃, 40% Glycerol

Product Images



The image on the left is immunohistochemistry of paraffin-embedded Human colon cancer tissue using PACO14634(XRCC6 Antibody) at dilution 1/10, on the right is treated with fusion protein. (Original magnification: x—200).



The image on the left is immunohistochemistry of paraffin-embedded Human esophagus cancer tissue using PACO14634(XRCC6 Antibody) at dilution 1/10, on the right is treated with fusion protein. (Original magnification: x—200).