

IRS1 Antibody



PACO14608

Product Information

Size:

50ul

Reactivity:

Human, Mouse, Rat

Source:

Rabbit

Isotype:

IgG

Applications:

ELISA, IHC

Recommended dilutions:

ELISA:1:1000-1:2000, IHC:1:25-1:100

Protein Background:

This gene encodes a protein which is phosphorylated by insulin receptor tyrosine kinase. Mutations in this gene are associated with type II diabetes and susceptibility to insulin resistance.

Gene ID:

IRS1

Uniprot

P35568

Synonyms:

insulin receptor substrate 1

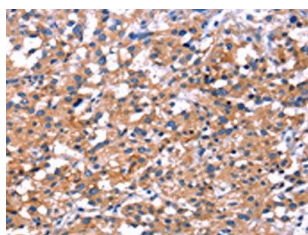
Immunogen:

Fusion protein of human IRS1.

Storage:

-20°C; C, pH7.4 PBS, 0.05% NaN₃, 40% Glycerol

Product Images



The image on the left is immunohistochemistry of paraffin-embedded Human thyroid cancer tissue using PACO14608(IRS1 Antibody) at dilution 1/30, on the right is treated with fusion protein. (Original magnification: x—200).