

PACO14556

Product Information

Size:

50ul

Reactivity:

Human, Mouse, Rat

Source:

Rabbit

Isotype:

IgG

Applications:

ELISA, IHC

Recommended dilutions:

ELISA:1:1000-1:2000, IHC:1:25-1:100

Protein Background:

Insulin-like growth factor-binding protein 5 is a protein that in humans is encoded by the IGFBP5 gene. IGF-binding proteins prolong the half-life of the IGFs and have been shown to either inhibit or stimulate the growth promoting effects of the IGFs on cell culture. They alter the interaction of IGFs with their cell surface receptors.

Gene ID:

IGFBP5

Uniprot

P24593

Synonyms:

insulin-like growth factor binding protein 5

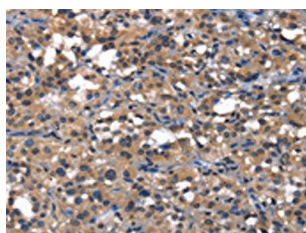
Immunogen:

Fusion protein of human IGFBP5.

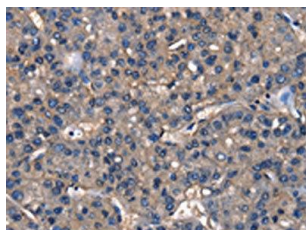
Storage:

-20° C, pH7.4 PBS, 0.05% NaN₃, 40% Glycerol

Product Images



The image on the left is immunohistochemistry of paraffin-embedded Human thyroid cancer tissue using PACO14556(IGFBP5 Antibody) at dilution 1/25, on the right is treated with fusion protein. (Original magnification: x—200).



The image on the left is immunohistochemistry of paraffin-embedded Human liver cancer tissue using PACO14556(IGFBP5 Antibody) at dilution 1/25, on the right is treated with fusion protein. (Original magnification: x—200).