

HSPH1 Antibody



PACO14542

Product Information

Size:

50ul

Reactivity:

Human, Mouse, Rat

Source:

Rabbit

Isotype:

IgG

Applications:

ELISA, WB

Recommended dilutions:

ELISA:1:2000-1:5000, WB:1:500-1:2000

Protein Background:

Heat shock protein 105 kDa is a protein that in humans is encoded by the HSPH1 gene. Prevents the aggregation of denatured proteins in cells under severe stress, on which the ATP levels decrease markedly. Inhibits HSPA8/HSC70 ATPase and chaperone activities. Highly expressed in testis. Present at lower levels in most brain regions, except cerebellum. Overexpressed in cancer cells. Phosphorylation on Ser-509 may be important for regulation of the HSPA8/HSC70 chaperone activity.

Gene ID:

HSPH1

Uniprot

Q92598

Synonyms:

Heat shock 105kDa/110kDa protein 1

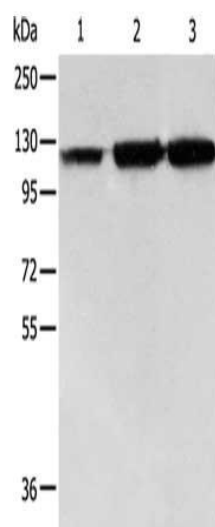
Immunogen:

Fusion protein of human HSPH1.

Storage:

-20° C, pH7.4 PBS, 0.05% NaN3, 40% Glycerol

Product Images



Gel: 8%SDS-PAGE, Lysate: 40 μ g, Lane 1-3: PC3 cells, human colon cancer tissue, Human liver cancer tissue, Primary antibody: PACO14542(HSPH1 Antibody) at dilution 1/500, Secondary antibody: Goat anti rabbit IgG at 1/8000 dilution, Exposure time: 40 seconds.