

PACO14467

Product Information

Size:

50ul

Reactivity:

Human, Mouse, Rat

Source:

Rabbit

Isotype:

IgG

Applications:

ELISA, IHC

Recommended dilutions:

ELISA:1:2000-1:5000, IHC:1:25-1:100

Protein Background:

The glucagon-like peptide 1 receptor (GLP1R) is a human gene which resides on chromosome 6. The protein encoded by this gene is a member of the glucagon receptor family of G protein-coupled receptors. GLP1R binds specifically the glucagon-like peptide-1 (GLP1) and has much lower affinity for related peptides such as the gastric inhibitory polypeptide and glucagon. GLP1R is known to be expressed in pancreatic beta cells. Activated GLP1R stimulates the adenylyl cyclase pathway which results in increased insulin synthesis and release of insulin. Consequently GLP1R has been suggested as a potential target for the treatment of diabetes.

Gene ID:

GLP1R

Uniprot

P43220

Synonyms:

glucagon-like peptide 1 receptor

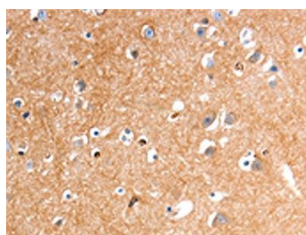
Immunogen:

Fusion protein of human GLP1R.

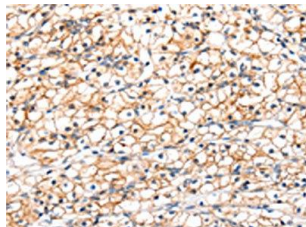
Storage:

-20° C, pH7.4 PBS, 0.05% NaN3, 40% Glycerol

Product Images



The image on the left is immunohistochemistry of paraffin-embedded Human brain tissue using PACO14467(GLP1R Antibody) at dilution 1/20, on the right is treated with fusion protein. (Original magnification: x—200).



The image on the left is immunohistochemistry of paraffin-embedded Human renal cancer tissue using PACO14467(GLP1R Antibody) at dilution 1/20, on the right is treated with fusion protein. (Original magnification: x—200).