

PACO14373

Product Information

Size:

50ul

Reactivity:

Human

Source:

Rabbit

Isotype:

IgG

Applications:

ELISA, WB

Recommended dilutions:

ELISA:1:2000-1:5000, WB:1:500-1:2000

Protein Background:

This gene encodes a protein that is one of the two components of elastic fibers. The encoded protein is rich in hydrophobic amino acid, such as glycine and proline, which form mobile hydrophobic regions bounded by crosslinks between lysine residues. Deletions and mutations in this gene are associated with supraaortic stenosis (SVAS) and autosomal dominant cutis laxa. Multiple transcript variants encoding different isoforms have been found for this gene.

Gene ID:

ELN

Uniprot

P15502

Synonyms:

elastin

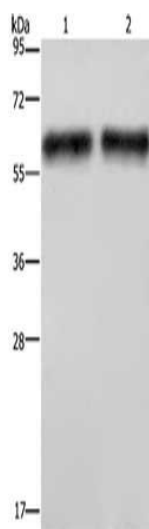
Immunogen:

Fusion protein of human ELN.

Storage:

-20°C; C, pH7.4 PBS, 0.05% NaN3, 40% Glycerol

Product Images



Gel: 10%SDS-PAGE, Lysate: 40 μ g, 60 μ g, Lane: Human hepatocellular carcinoma tissue, Primary antibody: PACO14373(ELN Antibody) at dilution 1/400, Secondary antibody: Goat anti rabbit IgG at 1/8000 dilution, Exposure time: 2 minutes.