

PACO14366

Product Information

Size:

50ul

Reactivity:

Human

Source:

Rabbit

Isotype:

IgG

Applications:

ELISA, WB

Recommended dilutions:

ELISA:1:1000-1:2000, WB:1:200-1:1000

Protein Background:

This gene encodes a member of the epidermal growth factor (EGF) repeat superfamily. Members of this superfamily are characterized by the presence of EGF-like repeats and are often involved in the regulation of cell cycle, proliferation, and developmental processes. The gene product contains a signal peptide, suggesting that it is secreted; an EGF repeat region consisting of 4 complete EGF-like repeats and 1 partial EGF-like repeat, 3 of which have a calcium-binding consensus sequence; an arg-gly-asp integrin association motif; and a MAM domain, which is believed to have an adhesive function. This gene is expressed early during development, and its expression has been detected in lung and meningioma tumors.

Gene ID:

EGFL6

Uniprot

Q8IU88

Synonyms:

EGF-like-domain, multiple 6

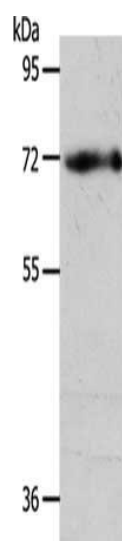
Immunogen:

Fusion protein of human EGFL6.

Storage:

-20° C, pH7.4 PBS, 0.05% NaN₃, 40% Glycerol

Product Images



Gel: 10%SDS-PAGE, Lysate: 40 μ g, Lane: Human fetal brain tissue, Primary antibody: PACO14366(EGFL6 Antibody) at dilution 1/450, Secondary antibody: Goat anti rabbit IgG at 1/8000 dilution, Exposure time: 20 seconds.