

# ECE1 Antibody



PACO14361

---

## Product Information

**Size:**

50ul

**Reactivity:**

Human, Mouse, Rat

**Source:**

Rabbit

**Isotype:**

IgG

**Applications:**

ELISA, WB

**Recommended dilutions:**

ELISA:1:1000-1:5000, WB:1:1000-1:5000

**Protein Background:**

The protein encoded by this gene is involved in proteolytic processing of endothelin precursors to biologically active peptides. Mutations in this gene are associated with Hirschsprung disease, cardiac defects and autonomic dysfunction. Alternatively spliced transcript variants encoding different isoforms have been noted for this gene.

**Gene ID:**

ECE1

**Uniprot**

P42892

**Synonyms:**

endothelin converting enzyme 1

**Immunogen:**

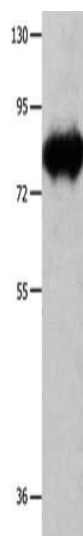
Fusion protein of human ECE1.

**Storage:**

-20&deg; C, pH7.4 PBS, 0.05% NaN<sub>3</sub>, 40% Glycerol

## Product Images

---



Gel: 8%SDS-PAGE, Lysate: 30  $\mu$ g, Lane: Mouse heart tissue, Primary antibody: PACO14361(ECE1 Antibody) at dilution 1/900, Secondary antibody: Goat anti rabbit IgG at 1/8000 dilution, Exposure time: 10 seconds.