

## Product Information

**Size:**

50ul

**Reactivity:**

Human

**Source:**

Rabbit

**Isotype:**

IgG

**Applications:**

ELISA, IHC

**Recommended dilutions:**

ELISA:1:2000-1:5000, IHC:1:50-1:200

**Protein Background:**

Endothelin-converting enzymes, such as ECE2 (EC 3.4.24.71), are type II metalloproteases that generate functionally pleiotropic members of the endothelin vasoactive peptide family. It converts big endothelin-1 to endothelin-1. Also involved in the processing of various neuroendocrine peptides, including neurotensin, angiotensin I, substance P, proenkephalin-derived peptides, and prodynorphin-derived peptides. May limit beta-amyloid peptide accumulation in brain. May also have methyltransferase activity.

**Gene ID:**

ECE2

**Uniprot**

O60344

**Synonyms:**

endothelin converting enzyme 2

**Immunogen:**

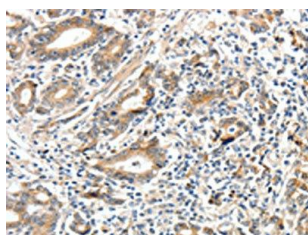
Fusion protein of human ECE2.

**Storage:**

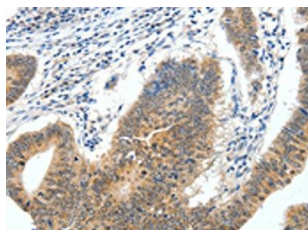
-20&deg; C, pH7.4 PBS, 0.05% NaN3, 40% Glycerol

## Product Images

---



The image on the left is immunohistochemistry of paraffin-embedded Human gastric cancer tissue using PACO14360(ECE2 Antibody) at dilution 1/40, on the right is treated with fusion protein. (Original magnification: x—200).



The image on the left is immunohistochemistry of paraffin-embedded Human colon cancer tissue using PACO14360(ECE2 Antibody) at dilution 1/40, on the right is treated with fusion protein. (Original magnification: x—200).