

PACO14322

Product Information

Size:

50ul

Reactivity:

Human, Mouse, Rat

Source:

Rabbit

Isotype:

IgG

Applications:

ELISA, WB, IHC

Recommended dilutions:

ELISA:1:2000-1:10000, WB:1:500-1:2000,
IHC:1:100-1:300

Protein Background:

This gene encodes a small heme protein that functions as a central component of the electron transport chain in mitochondria. The encoded protein associates with the inner membrane of the mitochondrion where it accepts electrons from cytochrome b and transfers them to the cytochrome oxidase complex. This protein is also involved in initiation of apoptosis. Mutations in this gene are associated with autosomal dominant nonsyndromic thrombocytopenia. Numerous processed pseudogenes of this gene are found throughout the human genome.

Gene ID:

CYCS

Uniprot

P99999

Synonyms:

cytochrome c, somatic

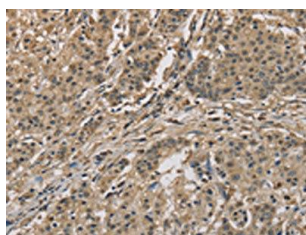
Immunogen:

Fusion protein of human CYCS.

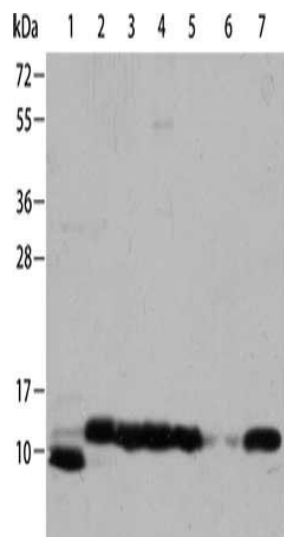
Storage:

-20° C, pH7.4 PBS, 0.05% NaN3, 40% Glycerol

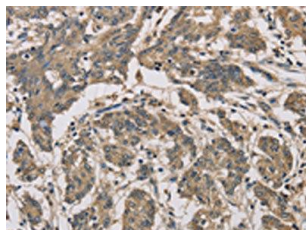
Product Images



The image is immunohistochemistry of paraffin-embedded Human gastric cancer tissue using PACO14322(CYCS Antibody) at dilution 1/70. (Original magnification: x—200).



Gel: 8%SDS-PAGE, Lysate: 40 μ g, Lane 1-7: Hela cells, K562 cells, mouse brain tissue, Mouse heart tissue, Mouse kidney tissue, PC3 cells, Jurkat cells, Primary antibody: PACO14322(CYCS Antibody) at dilution 1/700, Secondary antibody: Goat anti rabbit IgG at 1/8000 dilution, Exposure time: 5 seconds.



The image is immunohistochemistry of paraffin-embedded Human colon cancer tissue using PACO14322(CYCS Antibody) at dilution 1/70. (Original magnification: x—200).