

PACO14321

---

## Product Information

**Size:**

50ul

**Reactivity:**

Human, Mouse, Rat

**Source:**

Rabbit

**Isotype:**

IgG

**Applications:**

ELISA, WB, IHC

**Recommended dilutions:**

ELISA:1:2000-1:5000, WB:1:500-1:2000,  
IHC:1:50-1:200

**Protein Background:**

This gene encodes a small heme protein that functions as a central component of the electron transport chain in mitochondria. The encoded protein associates with the inner membrane of the mitochondrion where it accepts electrons from cytochrome b and transfers them to the cytochrome oxidase complex. This protein is also involved in initiation of apoptosis. Mutations in this gene are associated with autosomal dominant nonsyndromic thrombocytopenia. Numerous processed pseudogenes of this gene are found throughout the human genome.

**Gene ID:**

CYCS

**Uniprot**

P99999

**Synonyms:**

cytochrome c, somatic

**Immunogen:**

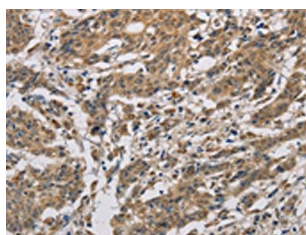
Fusion protein of human CYCS.

**Storage:**

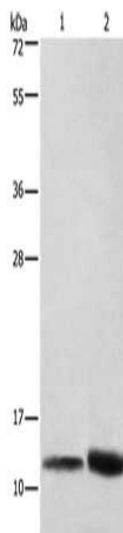
-20&deg; C, pH7.4 PBS, 0.05% NaN3, 40% Glycerol

## Product Images

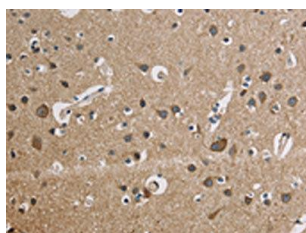
---



The image is immunohistochemistry of paraffin-embedded Human gastric cancer tissue using PACO14321(CYCS Antibody) at dilution 1/50. (Original magnification: x—200).



Gel: 8%SDS-PAGE, Lysate: 40 &mu; g, Lane 1-2: HeLa cells, mouse brain tissue, Primary antibody: PACO14321(CYCS Antibody) at dilution 1/600, Secondary antibody: Goat anti rabbit IgG at 1/8000 dilution, Exposure time: 10 seconds.



The image is immunohistochemistry of paraffin-embedded Human brain tissue using PACO14321(CYCS Antibody) at dilution 1/50. (Original magnification: x—200).