

### Product Information

**Size:**

50ul

**Reactivity:**

Human

**Source:**

Rabbit

**Isotype:**

IgG

**Applications:**

ELISA, IHC

**Recommended dilutions:**

ELISA:1:1000-1:5000, IHC:1:50-1:200

**Protein Background:**

This gene is a member of the connexin gene family. The encoded protein is a component of gap junctions, which are composed of arrays of intercellular channels that provide a route for the diffusion of low molecular weight materials from cell to cell. Mutations in this gene can cause non-syndromic deafness or erythrokeratoderma variabilis, a skin disorder. Alternative splicing results in multiple transcript variants encoding the same protein.

**Gene ID:**

GJB3

**Uniprot**

O75712

**Synonyms:**

gap junction protein, beta 3, 31kDa

**Immunogen:**

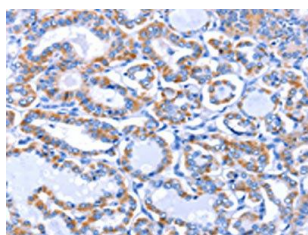
Fusion protein of human GJB3.

**Storage:**

-20&deg; C, pH7.4 PBS, 0.05% NaN<sub>3</sub>, 40% Glycerol

## Product Images

---



The image on the left is immunohistochemistry of paraffin-embedded Human thyroid cancer tissue using PACO14303(GJB3 Antibody) at dilution 1/30, on the right is treated with fusion protein. (Original magnification: x—200).