

PACO14276

---

## Product Information

**Size:**

50ul

**Reactivity:**

Human

**Source:**

Rabbit

**Isotype:**

IgG

**Applications:**

ELISA, WB, IHC

**Recommended dilutions:**

ELISA:1:1000-1:2000, WB:1:200-1:1000,  
IHC:1:25-1:100

**Protein Background:**

This gene encodes a member of the claudin family. Claudins are integral membrane proteins and components of tight junction strands. Tight junction strands serve as a physical barrier to prevent solutes and water from passing freely through the paracellular space between epithelial or endothelial cell sheets, and also play critical roles in maintaining cell polarity and signal transductions. This gene is expressed in germinal center B-cells, placenta and stomach as well as in colon tumor. This gene is down-regulated in intestinal type gastric cancer.

**Gene ID:**

CLDN23

**Uniprot**

Q96B33

**Synonyms:**

claudin 23

**Immunogen:**

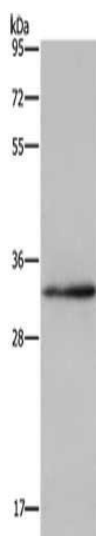
Fusion protein of human CLDN23.

**Storage:**

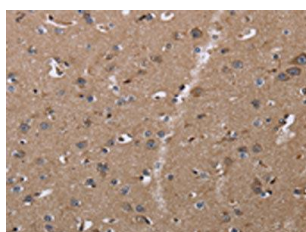
-20&deg; C, pH7.4 PBS, 0.05% NaN<sub>3</sub>, 40% Glycerol

## Product Images

---



Gel: 10%SDS-PAGE, Lysate: 40  $\mu$ g, Lane: HeLa cells, Primary antibody: PACO14276(CLDN23 Antibody) at dilution 1/200, Secondary antibody: Goat anti rabbit IgG at 1/8000 dilution, Exposure time: 3 minutes.



The image on the left is immunohistochemistry of paraffin-embedded Human brain tissue using PACO14276(CLDN23 Antibody) at dilution 1/30, on the right is treated with fusion protein. (Original magnification:  $\times$ —200).