

PACO14237

Product Information

Size:

50ul

Reactivity:

Human

Source:

Rabbit

Isotype:

IgG

Applications:

ELISA, IHC

Recommended dilutions:

ELISA:1:2000-1:5000, IHC:1:50-1:200

Protein Background:

CEACAM21 is a gene which encodes carcinoembryonic antigen. It belongs to the immunoglobulin superfamily-CEA family. Three isoforms of the human protein are produced by alternative splicing. High levels of expression in hematopoietic system, brain and muscle.

Gene ID:

CEACAM21

Uniprot

Q3KPI0

Synonyms:

carcinoembryonic antigen-related cell adhesion molecule 21

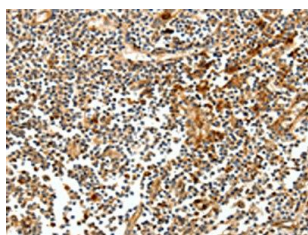
Immunogen:

Fusion protein of human CEACAM21.

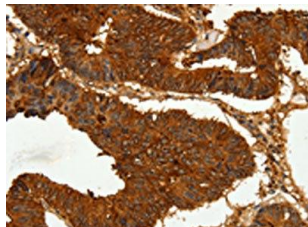
Storage:

-20° C, pH7.4 PBS, 0.05% NaN₃, 40% Glycerol

Product Images



The image on the left is immunohistochemistry of paraffin-embedded Human tonsil tissue using PACO14237(CEACAM21 Antibody) at dilution 1/60, on the right is treated with fusion protein. (Original magnification: x—200).



The image on the left is immunohistochemistry of paraffin-embedded Human colon cancer tissue using PACO14237(CEACAM21 Antibody) at dilution 1/60, on the right is treated with fusion protein. (Original magnification: x—200).