

SAR1B Antibody



PACO14087

Product Information

Size:

50ul

Reactivity:

Human, Mouse, Rat

Source:

Rabbit

Isotype:

IgG

Applications:

ELISA, IHC

Recommended dilutions:

ELISA:1:1000-1:2000, IHC:1:25-1:100

Protein Background:

The protein encoded by this gene is a small GTPase that acts as a homodimer. The encoded protein is activated by the guanine nucleotide exchange factor PREB and is involved in protein transport from the endoplasmic reticulum to the Golgi. This protein is part of the COPII coat complex. Defects in this gene are a cause of chylomicron retention disease (CMRD), also known as Anderson disease (ANDD). Two transcript variants encoding the same protein have been found for this gene.

Gene ID:

SAR1B

Uniprot

Q9Y6B6

Synonyms:

secretion associated, Ras related GTPase 1B

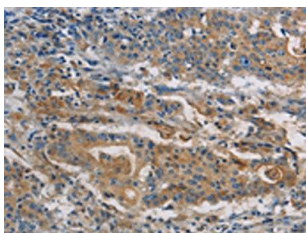
Immunogen:

Fusion protein of human SAR1B.

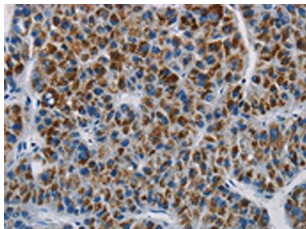
Storage:

-20° C, pH7.4 PBS, 0.05% NaN₃, 40% Glycerol

Product Images



The image is immunohistochemistry of paraffin-embedded Human gastric cancer tissue using PACO14087(SAR1B Antibody) at dilution 1/20. (Original magnification: x—200).



The image is immunohistochemistry of paraffin-embedded Human liver cancer tissue using PACO14087(SAR1B Antibody) at dilution 1/20. (Original magnification: x—200).