

# SAR1B Antibody



PACO14086

---

## Product Information

**Size:**

50ul

**Reactivity:**

Human, Mouse, Rat

**Source:**

Rabbit

**Isotype:**

IgG

**Applications:**

ELISA, IHC

**Recommended dilutions:**

ELISA:1:1000-1:2000, IHC:1:25-1:100

**Protein Background:**

The protein encoded by this gene is a small GTPase that acts as a homodimer. The encoded protein is activated by the guanine nucleotide exchange factor PREB and is involved in protein transport from the endoplasmic reticulum to the Golgi. This protein is part of the COPII coat complex. Defects in this gene are a cause of chylomicron retention disease (CMRD), also known as Anderson disease (ANDD). Two transcript variants encoding the same protein have been found for this gene.

**Gene ID:**

SAR1B

**Uniprot**

Q9Y6B6

**Synonyms:**

secretion associated, Ras related GTPase 1B

**Immunogen:**

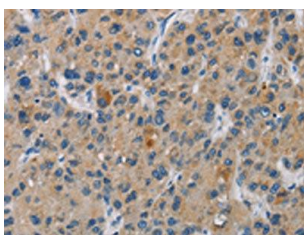
Fusion protein of human SAR1B.

**Storage:**

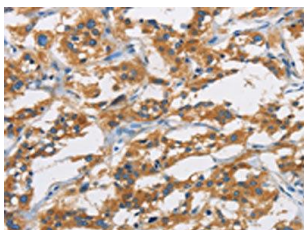
-20&deg; C, pH7.4 PBS, 0.05% NaN<sub>3</sub>, 40% Glycerol

## Product Images

---



The image is immunohistochemistry of paraffin-embedded Human liver cancer tissue using PACO14086(SAR1B Antibody) at dilution 1/20. (Original magnification: x—200).



The image is immunohistochemistry of paraffin-embedded Human thyroid cancer tissue using PACO14086(SAR1B Antibody) at dilution 1/20. (Original magnification: x—200).