

Product Information

Size:

50ul

Reactivity:

Human

Source:

Rabbit

Isotype:

IgG

Applications:

ELISA, WB, IHC

Recommended dilutions:

ELISA:1:500-1:5000, WB:1:500-1:2000,
IHC:1:5-1:20

Protein Background:

The protein encoded by this gene is a subunit of the receptor for IL23A/IL23. This protein pairs with the receptor molecule IL12RB1/IL12Rbeta1, and both are required for IL23A signaling. This protein associates constitutively with Janus kinase 2 (JAK2), and also binds to transcription activator STAT3 in a ligand-dependent manner.

Gene ID:

IL23R

Uniprot

Q5VWK5

Synonyms:

Interleukin-23 receptor

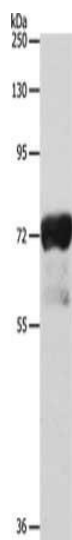
Immunogen:

Fusion protein of human IL23R.

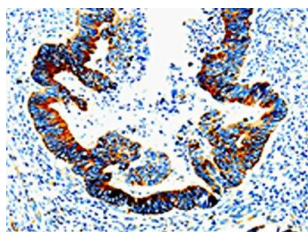
Storage:

-20° C, pH7.4 PBS, 0.05% NaN3, 40% Glycerol

Product Images



Gel: 8%SDS-PAGE, Lysate: 40 μ g, Lane: Human sigmoid tissue, Primary antibody: PACO13990(IL23R Antibody) at dilution 1/300, Secondary antibody: Goat anti rabbit IgG at 1/8000 dilution, Exposure time: 30 seconds.



The image on the left is immunohistochemistry of paraffin-embedded Human rectal cancer tissue using PACO13990(IL23R Antibody) at dilution 1/10, on the right is treated with fusion protein. (Original magnification: x—200).