

Product Information

Size:

50ul

Reactivity:

Human

Source:

Rabbit

Isotype:

IgG

Applications:

ELISA, IHC

Recommended dilutions:

ELISA:1:1000-1:10000, IHC:1:25-1:100

Protein Background:

This gene encodes a single-pass type I membrane protein that shares similarity with the interleukin-17 receptor (IL-17RA). Unlike IL-17RA, which is predominantly expressed in hemopoietic cells, and binds with high affinity to only IL-17A, this protein is expressed in nonhemopoietic tissues, and binds both IL-17A and IL-17F with similar affinities. The proinflammatory cytokines, IL-17A and IL-17F, have been implicated in the progression of inflammatory and autoimmune diseases. Multiple alternatively spliced transcript variants encoding different isoforms have been detected for this gene, and it has been proposed that soluble, secreted proteins lacking transmembrane and intracellular domains may function as extracellular antagonists to cytokine signaling.

Gene ID:

IL17RC

Uniprot

Q8NAC3

Synonyms:

Interleukin-17 receptor C

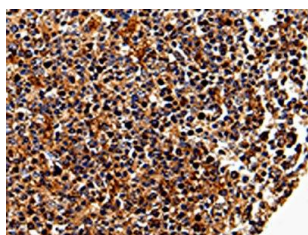
Immunogen:

Fusion protein of human IL17RC.

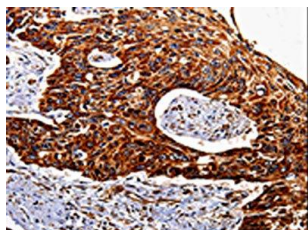
Storage:

-20° C, pH7.4 PBS, 0.05% NaN₃, 40% Glycerol

Product Images



The image is immunohistochemistry of paraffin-embedded Human tonsil tissue using PACO13976(IL17RC Antibody) at dilution 1/20. (Original magnification: x—200).



The image is immunohistochemistry of paraffin-embedded Human esophagus cancer tissue using PACO13976(IL17RC Antibody) at dilution 1/20. (Original magnification: x—200).