

Product Information

Size:

50ul

Reactivity:

Human

Source:

Rabbit

Isotype:

IgG

Applications:

ELISA, IHC

Recommended dilutions:

ELISA:1:1000-1:2000, IHC:1:25-1:100

Protein Background:

This gene encodes a member of a family of proteins containing a Bcl-2 homology domain 2 (BH2). The encoded protein is an anti-apoptotic factor that acts as an inhibitor of caspases 3 and 7 in the cytoplasm. In the nucleus, it binds to the p53 tumor suppressor protein, preventing its association with target genes. Overexpression of this gene has been detected in a number of different cancers. There is a pseudogene for this gene on chromosome 3. Alternative splicing results in multiple transcript variants.

Gene ID:

BCL2L12

Uniprot

Q9HB09

Synonyms:

BCL2-like 12 (proline rich)

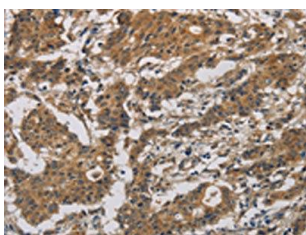
Immunogen:

Fusion protein of human BCL2L12.

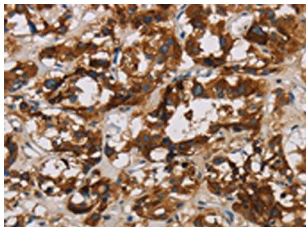
Storage:

-20° C, pH7.4 PBS, 0.05% NaN₃, 40% Glycerol

Product Images



The image is immunohistochemistry of paraffin-embedded Human gastric cancer tissue using PACO13958(BCL2L12 Antibody) at dilution 1/20. (Original magnification: x—200).



The image is immunohistochemistry of paraffin-embedded Human thyroid cancer tissue using PACO13958(BCL2L12 Antibody) at dilution 1/20. (Original magnification: x—200).