

Product Information

Size:

50ul

Reactivity:

Human, Mouse, Rat

Source:

Rabbit

Isotype:

IgG

Applications:

ELISA, WB, IHC

Recommended dilutions:

ELISA:1:500-1:2000, WB:1:200-1:1000,
IHC:1:10-1:50

Protein Background:

The JTV1 gene is located on chromosome 7p22 flanked by two genes, HRI and PMS2. JTV1 and HRI overlap slightly and are arranged in a tail-to-tail fashion. JTV1 and PMS2 are separated by approximately 200 base pairs and are arranged head-to-head. JTV1 is transcribed in the opposite direction compared to HRI and PMS2. The function of the JTV1 gene product is unknown.

Gene ID:

AIMP2

Uniprot

Q13155

Synonyms:

Aminoacyl tRNA synthase complex-interacting multifunctional protein 2

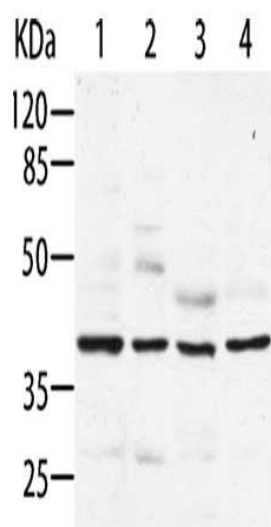
Immunogen:

Fusion protein of human AIMP2.

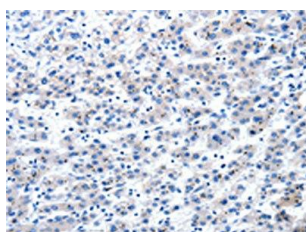
Storage:

-20° C, pH7.4 PBS, 0.05% NaN₃, 40% Glycerol

Product Images



Gel: 8%SDS-PAGE, Lysate: 40 μ g, Lane 1-4: Hela cells, HepG2 cells, MCF7 cells, HT29 cells, Primary antibody: PACO13923(AIMP2 Antibody) at dilution 1/200, Secondary antibody: Goat anti rabbit IgG at 1/8000 dilution, Exposure time: 1 minute.



The image on the left is immunohistochemistry of paraffin-embedded Human liver cancer tissue using PACO13923(AIMP2 Antibody) at dilution 1/25, on the right is treated with fusion protein. (Original magnification: x—200).