

### Product Information

**Size:**

50ul

**Reactivity:**

Human, Mouse, Rat

**Source:**

Rabbit

**Isotype:**

IgG

**Applications:**

ELISA, WB, IHC

**Recommended dilutions:**

ELISA:1:1000-1:2000, WB:1:200-1:1000,  
IHC:1:25-1:100

**Protein Background:**

This gene encodes a member of the Smad family of signal transduction proteins. Smad proteins are phosphorylated and activated by transmembrane serine-threonine receptor kinases in response to TGF-beta signaling. The product of this gene forms homomeric complexes and heteromeric complexes with other activated Smad proteins, which then accumulate in the nucleus and regulate the transcription of target genes. This protein binds to DNA and recognizes an 8-bp palindromic sequence (GTCTAGAC) called the Smad-binding element (SBE).

**Gene ID:**

SMAD4

**Uniprot**

Q13485

**Synonyms:**

SMAD family member 4

**Immunogen:**

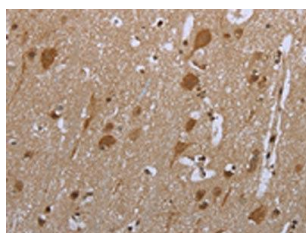
Fusion protein of human SMAD4.

**Storage:**

-20&deg; C, pH7.4 PBS, 0.05% NaN3, 40% Glycerol

## Product Images

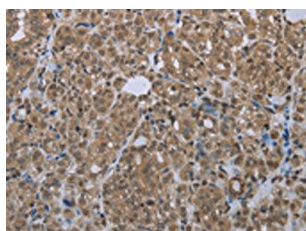
---



The image is immunohistochemistry of paraffin-embedded Human brain tissue using PACO13920(SMAD4 Antibody) at dilution 1/20. (Original magnification: x—200).



Gel: 8%SDS-PAGE, Lysate: 40 &mu; g, Lane: 293T cells, Primary antibody: PACO13920(SMAD4 Antibody) at dilution 1/300, Secondary antibody: Goat anti rabbit IgG at 1/8000 dilution, Exposure time: 2 minutes.



The image is immunohistochemistry of paraffin-embedded Human thyroid cancer tissue using PACO13920(SMAD4 Antibody) at dilution 1/20. (Original magnification: x—200).