

Product Information

Size:

50ul

Reactivity:

Human

Source:

Rabbit

Isotype:

IgG

Applications:

ELISA, IHC

Recommended dilutions:

ELISA:1:1000-1:2000, IHC:1:15-1:50

Protein Background:

This protein is one of the nuclear-coded polypeptide chains of cytochrome c oxidase, the terminal oxidase in mitochondrial electron transport. The COX7B2 gene encodes an 80-residue protein and has a 499-bp mRNA transcript. The COX7B2 gene contains 3 exons and maps to chromosome 4p12. For a discussion of a possible association between variation in the COX7B2 gene and susceptibility to the development of nasopharyngeal carcinoma, see NPCA1.

Gene ID:

COX7B2

Uniprot

Q8TF08

Synonyms:

cytochrome c oxidase subunit VIIb2

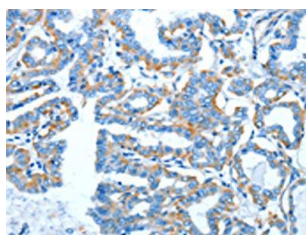
Immunogen:

Fusion protein of human COX7B2.

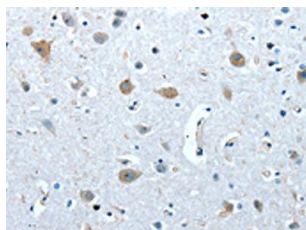
Storage:

-20° C, pH7.4 PBS, 0.05% NaN₃, 40% Glycerol

Product Images



The image on the left is immunohistochemistry of paraffin-embedded Human thyroid cancer tissue using PACO13915(COX7B2 Antibody) at dilution 1/20, on the right is treated with fusion protein. (Original magnification: x—200).



The image on the left is immunohistochemistry of paraffin-embedded Human brain tissue using PACO13915(COX7B2 Antibody) at dilution 1/20, on the right is treated with fusion protein. (Original magnification: x—200).