

Product Information

Size:

50ul

Reactivity:

Human, Mouse

Source:

Rabbit

Isotype:

IgG

Applications:

ELISA, IHC

Recommended dilutions:

ELISA:1:500-1:5000, IHC:1:25-1:100

Protein Background:

This protein is encoded by COX16, corresponding to the previously uncharacterized open reading frame YJL003w of the yeast genome. COX16 was identified in studies of COX-deficient mutants previously assigned to complementation group G22 of a collection of yeast pet mutants. To determine its location, Cox16p was tagged with a Myc epitope at the C terminus.

Gene ID:

COX16

Uniprot

Q9P0S2

Synonyms:

COX16 cytochrome c oxidase assembly homolog (S. cerevisiae)

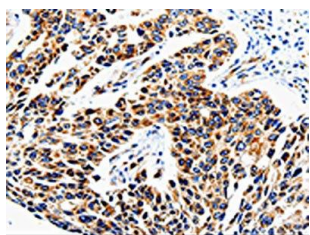
Immunogen:

Fusion protein of human COX16.

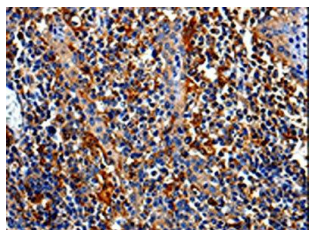
Storage:

-20° C, pH7.4 PBS, 0.05% NaN₃, 40% Glycerol

Product Images



The image is immunohistochemistry of paraffin-embedded Human lung cancer tissue using PACO13906(COX16 Antibody) at dilution 1/50. (Original magnification: x—200).



The image is immunohistochemistry of paraffin-embedded Human tonsil tissue using PACO13906(COX16 Antibody) at dilution 1/50. (Original magnification: x—200).