

ADAP1 Antibody



PACO13823

Product Information

Size:

50ul

Reactivity:

Human, Mouse

Source:

Rabbit

Isotype:

IgG

Applications:

ELISA, WB, IHC

Recommended dilutions:

ELISA:1:2000-1:5000, WB:1:200-1:1000,
IHC:1:25-1:100

Protein Background:

Arf-GAP with dual PH domain-containing protein 1 is a protein that in humans is encoded by the ADAP1 gene. GTPase-activating protein for the ADP ribosylation factor family. Binds phosphatidylinositol 3,4,5-trisphosphate (PtdInsP3) and inositol 1,3,4,5-tetrakisphosphate (InsP4).

Gene ID:

ADAP1

Uniprot

O75689

Synonyms:

ArfGAP with dual PH domains 1

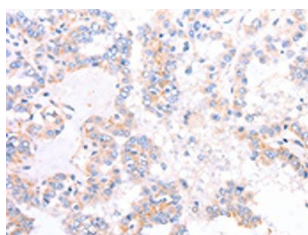
Immunogen:

Fusion protein of human ADAP1.

Storage:

-20° C, pH7.4 PBS, 0.05% NaN3, 40% Glycerol

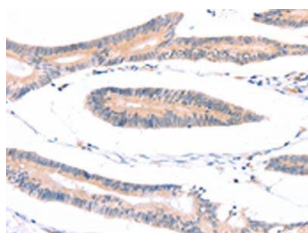
Product Images



The image on the left is immunohistochemistry of paraffin-embedded Human thyroid cancer tissue using PACO13823(ADAP1 Antibody) at dilution 1/40, on the right is treated with fusion protein. (Original magnification: x—200).



Gel: 10%SDS-PAGE, Lysate: 40 μ g, Lane: Mouse pancreas tissue, Primary antibody: PACO13823(ADAP1 Antibody) at dilution 1/162.5, Secondary antibody: Goat anti rabbit IgG at 1/8000 dilution, Exposure time: 20 seconds.



The image on the left is immunohistochemistry of paraffin-embedded Human colon cancer tissue using PACO13823(ADAP1 Antibody) at dilution 1/40, on the right is treated with fusion protein. (Original magnification: x—200).