

Product Information

Size:

50ul

Reactivity:

Human

Source:

Rabbit

Isotype:

IgG

Applications:

ELISA, IHC

Recommended dilutions:

ELISA:1:500-1:5000, IHC:1:5-1:20

Protein Background:

This gene encodes a member of the TALE/TGIF homeobox family of transcription factors. Testis-specific expression suggests that this gene may play a role in spermatogenesis. A homolog of this gene lies within the male specific region of chromosome Y, in a block of sequence that is thought to be the result of a large X-to-Y transposition.

Gene ID:

TGIF2LX

Uniprot

Q8IU1

Synonyms:

TGFB-induced factor homeobox 2-like, X-linked

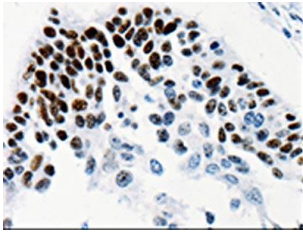
Immunogen:

Fusion protein of human TGIF2LX.

Storage:

-20° C, pH7.4 PBS, 0.05% NaN₃, 40% Glycerol

Product Images



The image on the left is immunohistochemistry of paraffin-embedded Human cervical cancer tissue using PACO13809(TGIF2LX Antibody) at dilution 1/25, on the right is treated with fusion protein. (Original magnification: x—200).