

RBMY1A1 Antibody



PACO13805

Product Information

Size:

50ul

Reactivity:

Human

Source:

Rabbit

Isotype:

IgG

Applications:

ELISA, WB

Recommended dilutions:

ELISA:1:2000-1:5000, WB:1:500-1:2000

Protein Background:

This gene encodes a protein containing an RNA-binding motif in the N-terminus and four SRGY (serine, arginine, glycine, tyrosine) boxes in the C-terminus. Multiple copies of this gene are found in the AZFb azoospermia factor region of chromosome Y and the encoded protein is thought to be involved in spermatogenesis. Most copies of this locus are pseudogenes, although six highly similar copies have full-length ORFs and are considered functional. Four functional copies of this gene are found within inverted repeat IR2; two functional copies of this gene are found in palindrome P3, along with two copies of PTPN13-like, Y-linked.

Gene ID:

RBMY1A1

Uniprot

P0DJD3

Synonyms:

RNA binding motif protein, Y-linked, family 1, member A1

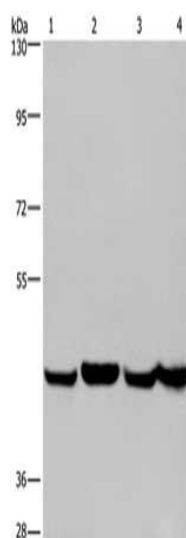
Immunogen:

Fusion protein of human RBMY1A1.

Storage:

-20°C, pH7.4 PBS, 0.05% NaN3, 40% Glycerol

Product Images



Gel: 6%SDS-PAGE, Lysate: 40 μ g, Lane 1-4: A549 cells, Hela cells, PC3 cells, HepG2 cells, Primary antibody: PACO13805(RBMY1A1 Antibody) at dilution 1/350, Secondary antibody: Goat anti rabbit IgG at 1/8000 dilution, Exposure time: 30 seconds.