

# RBMY1A1 Antibody



PACO13804

---

## Product Information

**Size:**

50ul

**Reactivity:**

Human

**Source:**

Rabbit

**Isotype:**

IgG

**Applications:**

ELISA, WB

**Recommended dilutions:**

ELISA:1:2000-1:5000, WB:1:500-1:2000

**Protein Background:**

This gene encodes a protein containing an RNA-binding motif in the N-terminus and four SRGY (serine, arginine, glycine, tyrosine) boxes in the C-terminus. Multiple copies of this gene are found in the AZFb azoospermia factor region of chromosome Y and the encoded protein is thought to be involved in spermatogenesis. Most copies of this locus are pseudogenes, although six highly similar copies have full-length ORFs and are considered functional. Four functional copies of this gene are found within inverted repeat IR2; two functional copies of this gene are found in palindrome P3, along with two copies of PTPN13-like, Y-linked.

**Gene ID:**

RBMY1A1

**Uniprot**

P0DJD3

**Synonyms:**

RNA binding motif protein, Y-linked, family 1, member A1

**Immunogen:**

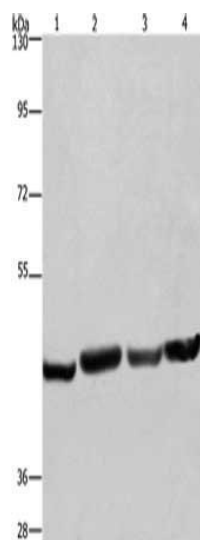
Fusion protein of human RBMY1A1.

**Storage:**

-20°C, pH7.4 PBS, 0.05% NaN3, 40% Glycerol

## Product Images

---



Gel: 6%SDS-PAGE, Lysate: 40  $\mu$ g, Lane 1-4: A549 cells, Hela cells, PC3 cells, HepG2 cells, Primary antibody: PACO13804(RBMY1A1 Antibody) at dilution 1/360, Secondary antibody: Goat anti rabbit IgG at 1/8000 dilution, Exposure time: 30 seconds.