

TERT Antibody



PACO07488

Product Information

Size:

50ug

Reactivity:

Human

Source:

Rabbit

Isotype:

IgG

Applications:

ELISA, WB, IHC

Recommended dilutions:

ELISA:1:5000-1:20000, WB:1:500-1:2000,
IHC-p:1:50-1:300

Protein Background:

Gene ID:

TERT

Uniprot

O14746

Synonyms:

Telomerase reverse transcriptase (EC 2.7.7.49) (HEST2) (Telomerase catalytic subunit) (Telomerase-associated protein 2) (TP2)

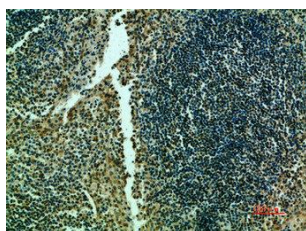
Immunogen:

Synthetic peptide from human protein at AA range: 1268-1341.

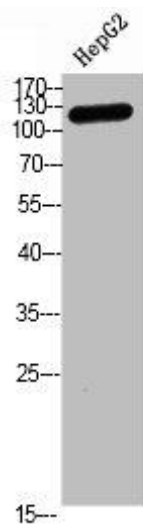
Storage:

PBS, pH 7.4, containing 0.02% sodium azide as Preservative and 50% Glycerol.

Product Images



Immunohistochemical analysis of paraffin-embedded human-tonsils, antibody was diluted at 1:200.



Western blot analysis of hepg2 Cell Lysate, antibody was diluted at 1:1000.