

# SUPT20H Antibody



PACO07459

---

## Product Information

**Size:**

50ug

**Reactivity:**

Human, Mouse, Rat

**Source:**

Rabbit

**Isotype:**

IgG

**Applications:**

ELISA, WB

**Recommended dilutions:**

ELISA:1:10000, WB:1:500-1:10000

**Protein Background:**

**Gene ID:**

SUPT20H

**Uniprot**

Q8NEM7

**Synonyms:**

FAM48A C13orf19 FP757

**Immunogen:**

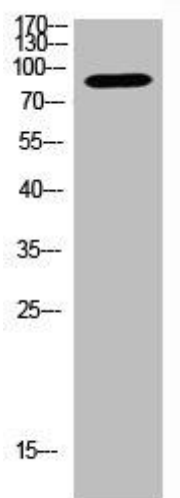
Synthetic peptide from AA range: 231-280.

**Storage:**

PBS, pH 7.4, containing 0.02% sodium azide as Preservative and 50% Glycerol.

## Product Images

---



Western Blot analysis of mouse-kidney cells using Antibody diluted at 1000.