

C1RL Antibody



PACO07453

Product Information

Size:

50ug

Reactivity:

Human

Source:

Rabbit

Isotype:

IgG

Applications:

ELISA, WB

Recommended dilutions:

ELISA:1:10000-1:20000, WB:1:500-1:2000

Protein Background:**Gene ID:**

C1RL

Uniprot

Q9NZP8

Synonyms:

Complement C1r subcomponent-like protein (C1r-LP) (C1r-like protein) (EC 3.4.21) (C1r-like serine protease analog protein) (CLSPa)

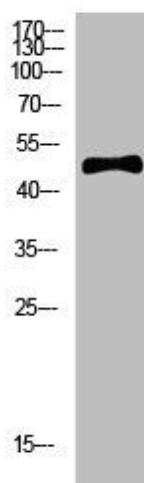
Immunogen:

Synthesized peptide derived from human C1RL. at AA range: 371-420.

Storage:

Liquid in PBS containing 50% glycerol, 0.5% BSA and 0.02% sodium azide.

Product Images



Western Blot analysis of hela cells using primary antibody diluted at 1:500(4°C overnight). Secondary antibody: Goat Anti-rabbit IgG IRDye 800(diluted at 1:5000, 25°C, 1 hour).