

GCM2 Antibody



PACO07445

Product Information

Size:

50ug

Reactivity:

Human, Mouse, Rat

Source:

Rabbit

Isotype:

IgG

Applications:

ELISA, WB

Recommended dilutions:

ELISA:1:10000-1:20000, WB:1:500-1:2000

Protein Background:**Gene ID:**

GCM2

Uniprot

O75603

Synonyms:

Chorion-specific transcription factor GCMb (hGCMb) (GCM motif protein 2) (Glial cells missing homolog 2)

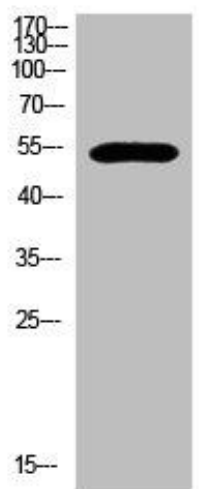
Immunogen:

Synthesized peptide derived from human GCM2. at AA range: 21-70.

Storage:

Liquid in PBS containing 50% glycerol, 0.5% BSA and 0.02% sodium azide.

Product Images



Western Blot analysis of 293T cells using primary antibody diluted at 1:500(4°C overnight). Secondary antibody: Goat Anti-rabbit IgG IRDye 800(diluted at 1:5000, 25°C, 1 hour).