

# COL8A2 Antibody



PACO07443

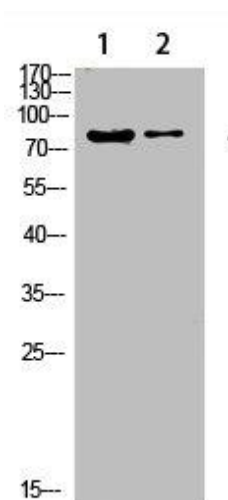
---

## Product Information

<b>Size:</b> 50ug	<b>Protein Background:</b>
<b>Reactivity:</b> Human, Mouse, Rat	<b>Gene ID:</b> COL8A2
<b>Source:</b> Rabbit	<b>Uniprot</b> P25067
<b>Isotype:</b> IgG	<b>Synonyms:</b> Collagen alpha-2(VIII) chain (Endothelial collagen)
<b>Applications:</b> ELISA, WB	<b>Immunogen:</b> Synthesized peptide derived from human COL8A2. at AA range: 611-660.
<b>Recommended dilutions:</b> ELISA:1:10000-1:20000, WB:1:500-1:2000	<b>Storage:</b> Liquid in PBS containing 50% glycerol, 0.5% BSA and 0.02% sodium azide.

## Product Images

---



Western Blot analysis of 1, hela 2,3T3 cells using primary antibody diluted at 1:500(4°C overnight). Secondary antibody: Goat Anti-rabbit IgG IRDye 800( diluted at 1:5000, 25°C, 1 hour).