

# COL19A1 Antibody



PACO07442

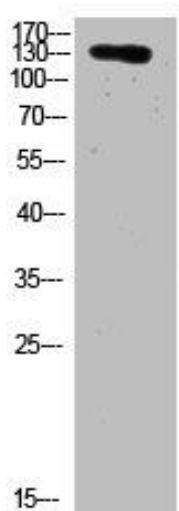
---

## Product Information

<b>Size:</b> 50ug	<b>Protein Background:</b>
<b>Reactivity:</b> Human	<b>Gene ID:</b> COL19A1
<b>Source:</b> Rabbit	<b>Uniprot</b> Q14993
<b>Isotype:</b> IgG	<b>Synonyms:</b> Collagen alpha-1(XIX) chain (Collagen alpha-1(Y) chain)
<b>Applications:</b> ELISA, WB	<b>Immunogen:</b> Synthesized peptide derived from human COL19A1. at AA range: 161-210.
<b>Recommended dilutions:</b> ELISA:1:10000-1:20000, WB:1:500-1:2000	<b>Storage:</b> Liquid in PBS containing 50% glycerol, 0.5% BSA and 0.02% sodium azide.

## Product Images

---



Western Blot analysis of HELA cells using primary antibody diluted at 1:2000(4°C overnight). Secondary antibody: Goat Anti-rabbit IgG IRDye 800( diluted at 1:5000, 25°C, 1 hour).