

# ATP6AP1 Antibody



PACO07441

---

## Product Information

**Size:**

50ug

**Reactivity:**

Human, Mouse, Rat

**Source:**

Rabbit

**Isotype:**

IgG

**Applications:**

ELISA, WB

**Recommended dilutions:**

ELISA:1:10000-1:20000, WB:1:500-1:2000

**Protein Background:****Gene ID:**

ATP6AP1

**Uniprot**

Q15904

**Synonyms:**

V-type proton ATPase subunit S1 (V-ATPase subunit S1) (Protein XAP-3) (V-ATPase Ac45 subunit) (V-ATPase S1 accessory protein) (Vacuolar proton pump subunit S1)

**Immunogen:**

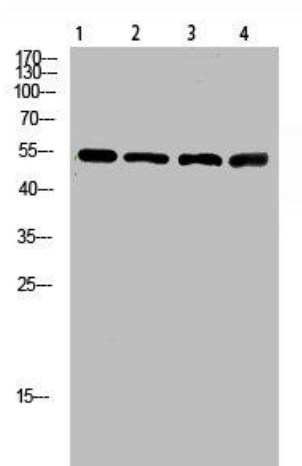
Synthesized peptide derived from human V-ATPase S1. at AA range: 421-470.

**Storage:**

Liquid in PBS containing 50% glycerol, 0.5% BSA and 0.02% sodium azide.

## Product Images

---



Western Blot analysis of 1, mouse-lung 2, mouse-brain 3, mouse-spleen 4, mouse-kidney cells using primary antibody diluted at 1:500(4°C overnight). Secondary antibody: Goat Anti-rabbit IgG IRDye 800( diluted at 1:5000, 25°C, 1 hour).