

COL1A2 Antibody

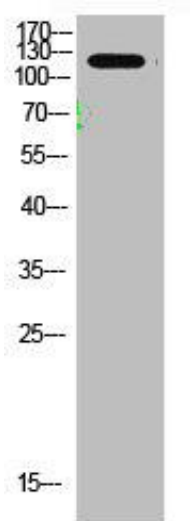


PACO07437

Product Information

Size: 50ug	Protein Background:
Reactivity: Human, Mouse, Rat	Gene ID: COL1A2
Source: Rabbit	Uniprot P08123
Isotype: IgG	Synonyms: Collagen alpha-2(I) chain (alpha-2 type I collagen)
Applications: ELISA, WB	Immunogen: Synthesized peptide derived from human Collagen I. at AA range: 468-542.
Recommended dilutions: ELISA:1:10000-1:20000, WB:1:500-1:2000	Storage: Liquid in PBS containing 50% glycerol, 0.5% BSA and 0.02% sodium azide.

Product Images



Western Blot analysis of mouse-brain cells using primary antibody diluted at 1:1000(4°C overnight). Secondary antibody: Goat Anti-rabbit IgG IRDye 800(diluted at 1:5000, 25°C, 1 hour).