

# NUTM1 Antibody



PACO07432

---

## Product Information

**Size:**

50ug

**Reactivity:**

Human

**Source:**

Rabbit

**Isotype:**

IgG

**Applications:**

ELISA, WB

**Recommended dilutions:**

ELISA:1:10000-1:20000, WB:1:500-1:2000

**Protein Background:**

**Gene ID:**

NUTM1

**Uniprot**

Q86Y26

**Synonyms:**

Protein NUT (Nuclear protein in testis)

**Immunogen:**

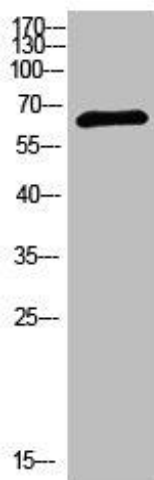
Synthesized peptide derived from human NUT. at AA range: 1082-1131.

**Storage:**

Liquid in PBS containing 50% glycerol, 0.5% BSA and 0.02% sodium azide.

## Product Images

---



Western Blot analysis of 293T cells using primary antibody diluted at 1:1000(4°C overnight). Secondary antibody: Goat Anti-rabbit IgG IRDye 800( diluted at 1:5000, 25°C, 1 hour).