

# Acetyl-ACSS1 (K642) Antibody



PACO07427

---

## Product Information

**Size:**

50ug

**Reactivity:**

Human, Mouse, Rat

**Source:**

Rabbit

**Isotype:**

IgG

**Applications:**

ELISA, WB

**Recommended dilutions:**

ELISA:1:10000-1:20000, WB:1:500-1:2000

**Protein Background:****Gene ID:**

ACSS1

**Uniprot**

Q9NUB1

**Synonyms:**

Acetyl-coenzyme A synthetase 2-like, mitochondrial (EC 6.2.1.1) (Acetate--CoA ligase 2) (Acetyl-CoA synthetase 2) (AceCS2) (Acyl-CoA synthetase short-chain family member 1)

**Immunogen:**

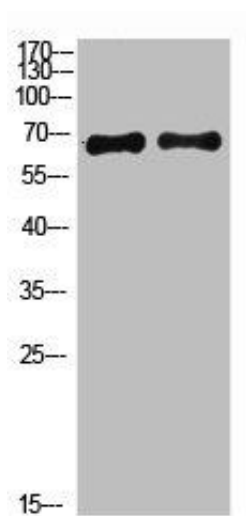
Synthesized Acetyl peptide derived from human ACSS1. at AA range: K642.

**Storage:**

Liquid in PBS containing 50% glycerol, 0.5% BSA and 0.02% sodium azide.

## Product Images

---



Western Blot analysis of 1,293T 2, hela cells using primary antibody diluted at 1:1000(4°C overnight). Secondary antibody: Goat Anti-rabbit IgG IRDye 800( diluted at 1:5000, 25°C, 1 hour).