

# MYH6/MYH7 Antibody



PACO07425

---

## Product Information

**Size:**

50ug

**Reactivity:**

Human, Mouse, Rat

**Source:**

Rabbit

**Isotype:**

IgG

**Applications:**

ELISA, IHC

**Recommended dilutions:**

ELISA:1:10000-1:20000, IHC-p:1:50-1:300

**Protein Background:****Gene ID:**

MYH6/MYH7

**Uniprot**

P13533/P12883

**Synonyms:****Immunogen:**

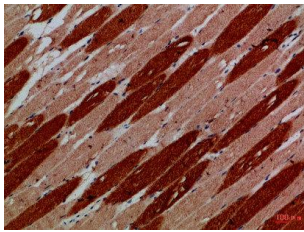
Synthetic peptide from human protein at AA range: 1871-1920.

**Storage:**

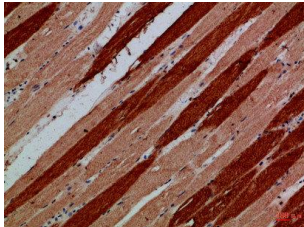
PBS, pH 7.4, containing 0.02% sodium azide as Preservative and 50% Glycerol.

## Product Images

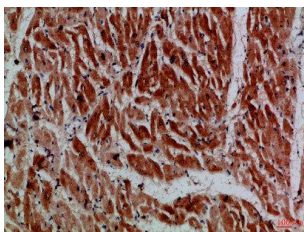
---



Immunohistochemical analysis of paraffin-embedded Human-skeletal-muscle, antibody was diluted at 1:100.



Immunohistochemical analysis of paraffin-embedded Human-skeletal-muscle, antibody was diluted at 1:100.



Immunohistochemical analysis of paraffin-embedded Human-heart, antibody was diluted at 1:100.