

CXCR1 Antibody



PACO07416

Product Information

Size:

50ug

Reactivity:

Human

Source:

Rabbit

Isotype:

IgG

Applications:

ELISA, IHC

Recommended dilutions:

ELISA:1:10000-1:20000, IHC-p:1:50-1:300

Protein Background:

Gene ID:

CXCR1

Uniprot

P25024

Synonyms:

C-X-C chemokine receptor type 1 (CXC-R1) (CXCR-1) (CDw128a) (High affinity interleukin-8 receptor A) (IL-8R A) (IL-8 receptor type 1) (CD antigen CD181)

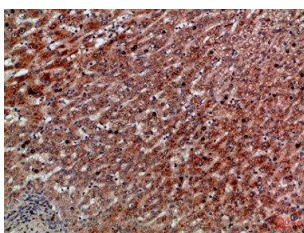
Immunogen:

Synthetic peptide from human protein at AA range: 1-50.

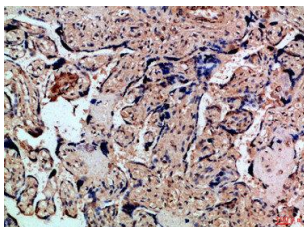
Storage:

PBS, pH 7.4, containing 0.02% sodium azide as Preservative and 50% Glycerol.

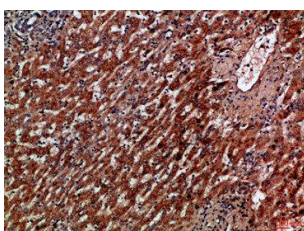
Product Images



Immunohistochemical analysis of paraffin-embedded Human-liver-cancer, antibody was diluted at 1:100.



Immunohistochemical analysis of paraffin-embedded Human-placenta, antibody was diluted at 1:100.



Immunohistochemical analysis of paraffin-embedded Human-liver-cancer, antibody was diluted at 1:100.