

PIK3R2 Antibody



PACO07409

Product Information

Size:

50ug

Reactivity:

Human, Mouse, Rat

Source:

Rabbit

Isotype:

IgG

Applications:

ELISA, IHC

Recommended dilutions:

ELISA:1:10000-1:20000, IHC-p:1:50-1:300

Protein Background:

Gene ID:

PIK3R2

Uniprot

O00459

Synonyms:

Phosphatidylinositol 3-kinase regulatory subunit beta (PI3-kinase regulatory subunit beta) (PI3K regulatory subunit beta) (PtdIns-3-kinase regulatory subunit beta) (Phosphatidylinositol 3-kinase 85 kDa regulatory subunit beta) (PI3-kinase subunit p85-beta) (PtdIns-3-kinase regulatory subunit p85-beta)

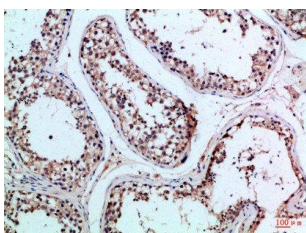
Immunogen:

Synthetic peptide from human protein at AA range: 1-60.

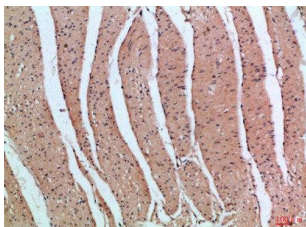
Storage:

PBS, pH 7.4, containing 0.02% sodium azide as Preservative and 50% Glycerol.

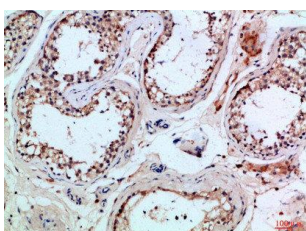
Product Images



Immunohistochemical analysis of paraffin-embedded Human-testis, antibody was diluted at 1:100.



Immunohistochemical analysis of paraffin-embedded Human-colon, antibody was diluted at 1:100.



Immunohistochemical analysis of paraffin-embedded Human-testis, antibody was diluted at 1:100.