

MZB1 Antibody



PACO07398

Product Information

Size:

50ug

Reactivity:

Human

Source:

Rabbit

Isotype:

IgG

Applications:

ELISA, IHC

Recommended dilutions:

ELISA:1:10000-1:20000, IHC-p:1:50-1:300

Protein Background:

Gene ID:

MZB1

Uniprot

Q8WU39

Synonyms:

Plasma cell-induced resident endoplasmic reticulum protein (Plasma cell-induced resident ER protein) (pERp1) (Proapoptotic caspase adapter protein)

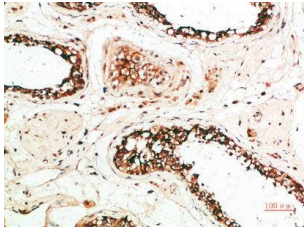
Immunogen:

Synthetic peptide from human protein at AA range: 1-50.

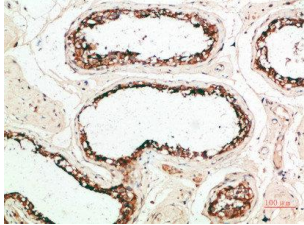
Storage:

PBS, pH 7.4, containing 0.02% sodium azide as Preservative and 50% Glycerol.

Product Images



Immunohistochemical analysis of paraffin-embedded human-testis, antibody was diluted at 1:200.



Immunohistochemical analysis of paraffin-embedded human-testis, antibody was diluted at 1:200.