

DLEU7 Antibody

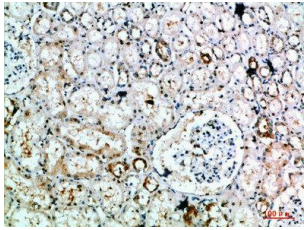


PACO07390

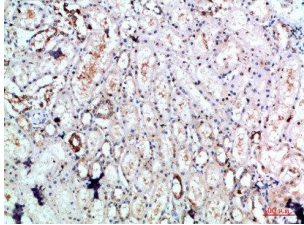
Product Information

Size: 50ug	Protein Background:
Reactivity: Human	Gene ID: DLEU7
Source: Rabbit	Uniprot Q6UYE1
Isotype: IgG	Synonyms: Leukemia-associated protein 7 (Deleted in lymphocytic leukemia 7)
Applications: ELISA, IHC	Immunogen: Synthetic peptide from human protein at AA range: 51-100.
Recommended dilutions: ELISA:1:10000-1:20000, IHC-p:1:50-1:300	Storage: PBS, pH 7.4, containing 0.02% sodium azide as Preservative and 50% Glycerol.

Product Images



Immunohistochemical analysis of paraffin-embedded human-kidney, antibody was diluted at 1:200.



Immunohistochemical analysis of paraffin-embedded human-kidney, antibody was diluted at 1:200.