

PACO07377

Product Information

Size:

50ug

Reactivity:

Human, Mouse

Source:

Rabbit

Isotype:

IgG

Applications:

ELISA, IHC

Recommended dilutions:

ELISA:1:10000-1:20000, IHC-p:1:50-1:300

Protein Background:

Gene ID:

CCL20

Uniprot

P78556

Synonyms:

C-C motif chemokine 20 (beta-chemokine exodus-1) (CC chemokine LARC) (Liver and activation-regulated chemokine) (Macrophage inflammatory protein 3 alpha) (MIP-3-alpha) (Small-inducible cytokine A20) [Cleaved into: CCL20(1-67); CCL20(1-64); CCL20(2-70)]

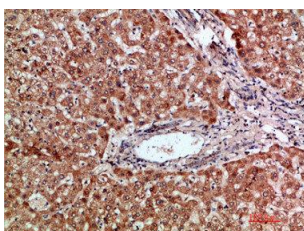
Immunogen:

Synthetic peptide from human protein at AA range: 31-80.

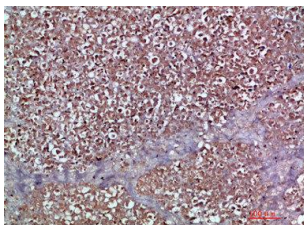
Storage:

PBS, pH 7.4, containing 0.02% sodium azide as Preservative and 50% Glycerol.

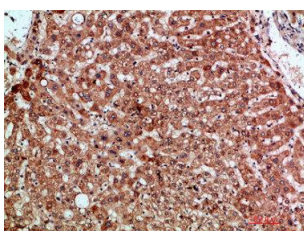
Product Images



Immunohistochemical analysis of paraffin-embedded human-liver, antibody was diluted at 1:200.



Immunohistochemical analysis of paraffin-embedded human-pancreas, antibody was diluted at 1:200.



Immunohistochemical analysis of paraffin-embedded human-liver, antibody was diluted at 1:200.