

PACO07373

Product Information

Size:

50ug

Reactivity:

Human

Source:

Rabbit

Isotype:

IgG

Applications:

ELISA, IHC

Recommended dilutions:

ELISA:1:10000-1:20000, IHC-p:1:50-1:300

Protein Background:

Gene ID:

GYPC

Uniprot

P04921

Synonyms:

Glycophorin-C (Glycoconnectin) (Glycophorin-D) (GPD) (Glycoprotein beta) (PAS-2') (Sialoglycoprotein D) (CD antigen CD236)

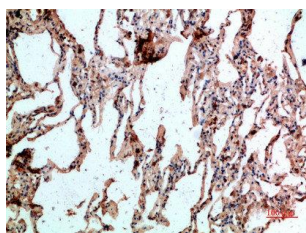
Immunogen:

Synthetic peptide from human protein at AA range: 11-60.

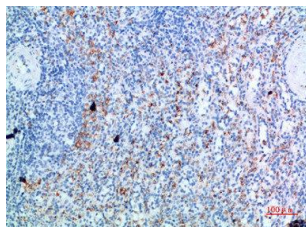
Storage:

PBS, pH 7.4, containing 0.02% sodium azide as Preservative and 50% Glycerol.

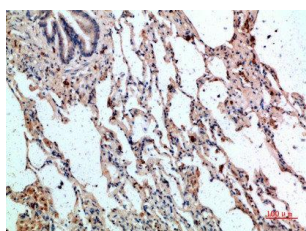
Product Images



Immunohistochemical analysis of paraffin-embedded human-lung, antibody was diluted at 1:200.



Immunohistochemical analysis of paraffin-embedded human-spleen, antibody was diluted at 1:200.



Immunohistochemical analysis of paraffin-embedded human-lung, antibody was diluted at 1:200.