

PACO07372

Product Information

Size:

50ug

Reactivity:

Human, Mouse, Rat

Source:

Rabbit

Isotype:

IgG

Applications:

ELISA, WB, IHC

Recommended dilutions:

ELISA:1:20000, WB:1:500-1:2000,
IHC:1:100-1:300

Protein Background:**Gene ID:**

CLEC4M

Uniprot

Q9H2X3

Synonyms:

C-type lectin domain family 4 member M (CD209 antigen-like protein 1) (DC-SIGN-related protein) (DC-SIGNR) (Dendritic cell-specific ICAM-3-grabbing non-integrin 2) (DC-SIGN2) (Liver/lymph node-specific ICAM-3-grabbing non-integrin) (L-SIGN) (CD antigen CD299)

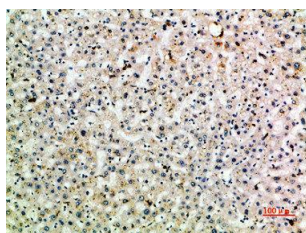
Immunogen:

Synthetic peptide from human protein at AA range: 271-320.

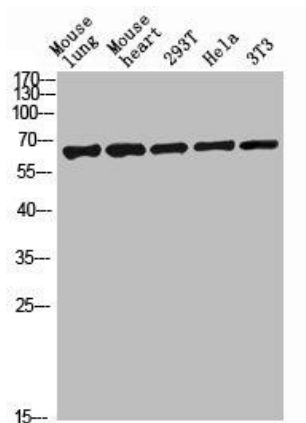
Storage:

PBS, pH 7.4, containing 0.02% sodium azide as Preservative and 50% Glycerol.

Product Images



Immunohistochemical analysis of paraffin-embedded human-liver, antibody was diluted at 1:200.



Western blot analysis of mouse-lung mouse-lung lysate, antibody was diluted at 2000. Secondary antibody was diluted at 1:20000.