

ART4 Antibody



PACO07369

Product Information

Size:

50ug

Reactivity:

Human

Source:

Rabbit

Isotype:

IgG

Applications:

ELISA, IHC

Recommended dilutions:

ELISA:1:10000-1:20000, IHC-p:1:50-1:300

Protein Background:

Gene ID:

ART4

Uniprot

Q93070

Synonyms:

Ecto-ADP-ribosyltransferase 4 (EC 2.4.2.31) (ADP-ribosyltransferase C2 and C3 toxin-like 4) (ARTC4) (Dombrock blood group carrier molecule) (Mono(ADP-ribosyl)transferase 4) (NAD(P)(+)-arginine ADP-ribosyltransferase 4) (CD antigen CD297)

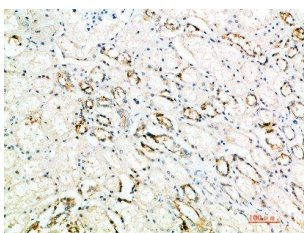
Immunogen:

Synthetic peptide from human protein at AA range: 181-230.

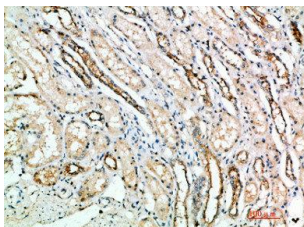
Storage:

PBS, pH 7.4, containing 0.02% sodium azide as Preservative and 50% Glycerol.

Product Images



Immunohistochemical analysis of paraffin-embedded human-kidney, antibody was diluted at 1:200.



Immunohistochemical analysis of paraffin-embedded human-kidney, antibody was diluted at 1:200.